

## Summary

Summary .....	1
DRIVER .....	2
COM PORT .....	3
Terminal .....	4
Connection .....	5
Menu .....	6
Setup .....	7

## DRIVER

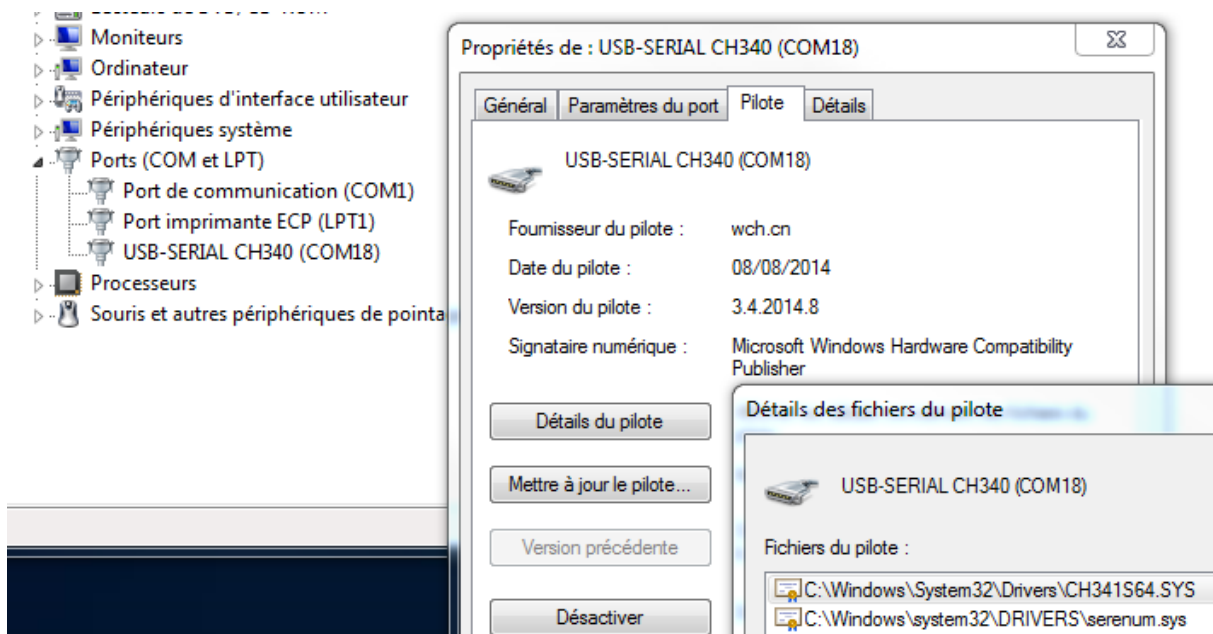
Install **CH340G** driver

Windows: <http://www.arduined.eu/tag/windows-7/>

Mac: [https://wiki.wemos.cc/\\_media/ch341ser\\_mac\\_1.5.zip](https://wiki.wemos.cc/_media/ch341ser_mac_1.5.zip)

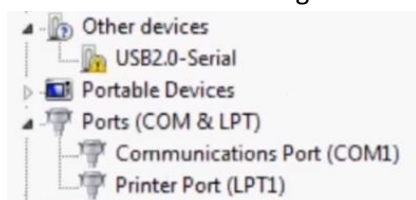
Chip Manufacturer driver [http://www.wch.cn/download/CH341SER\\_EXE.html](http://www.wch.cn/download/CH341SER_EXE.html)

After restarting the PC, plug in the AC-CDI v10 via USB connector and it will be ready to go.



If it's not working, open "*Device Manager*", plug the CDI in, open *Ports, Driver* tab, if another Windows driver is in there, then "*Update driver*" find and install the one above for CH340.

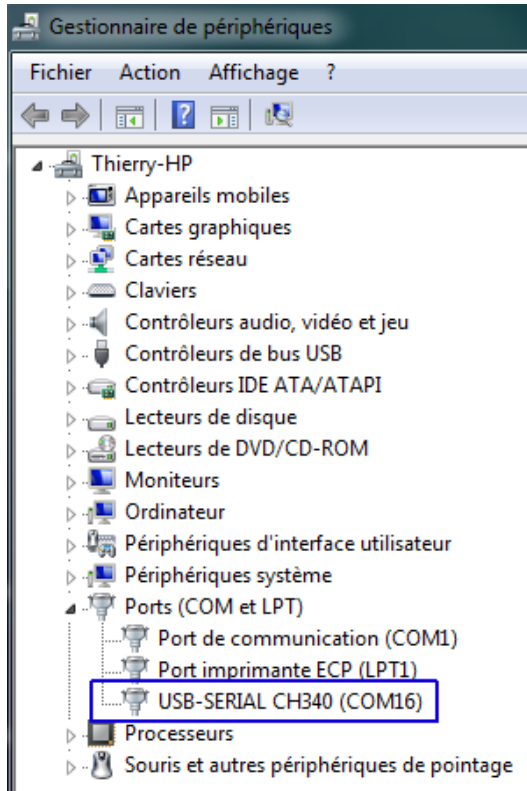
If Windows doesn't recognize the device, it'll appear in "*Other devices*" folder.



## COM PORT

Open "*Device Manager*" under "*Ports (COM&LPT)*" you should notice a new COM-port

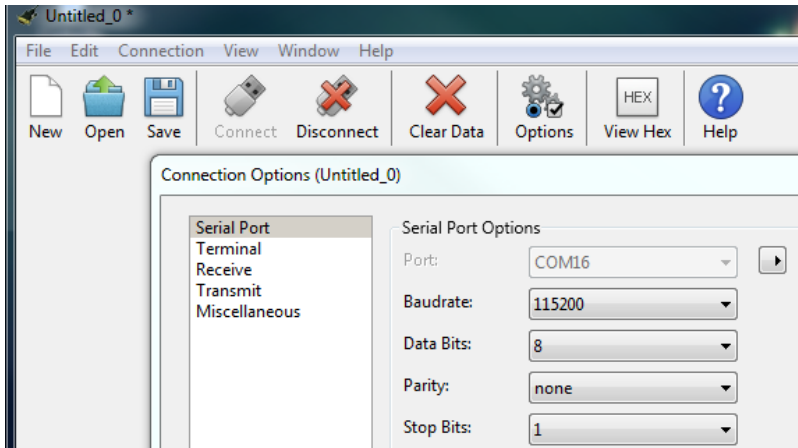
Note the number.



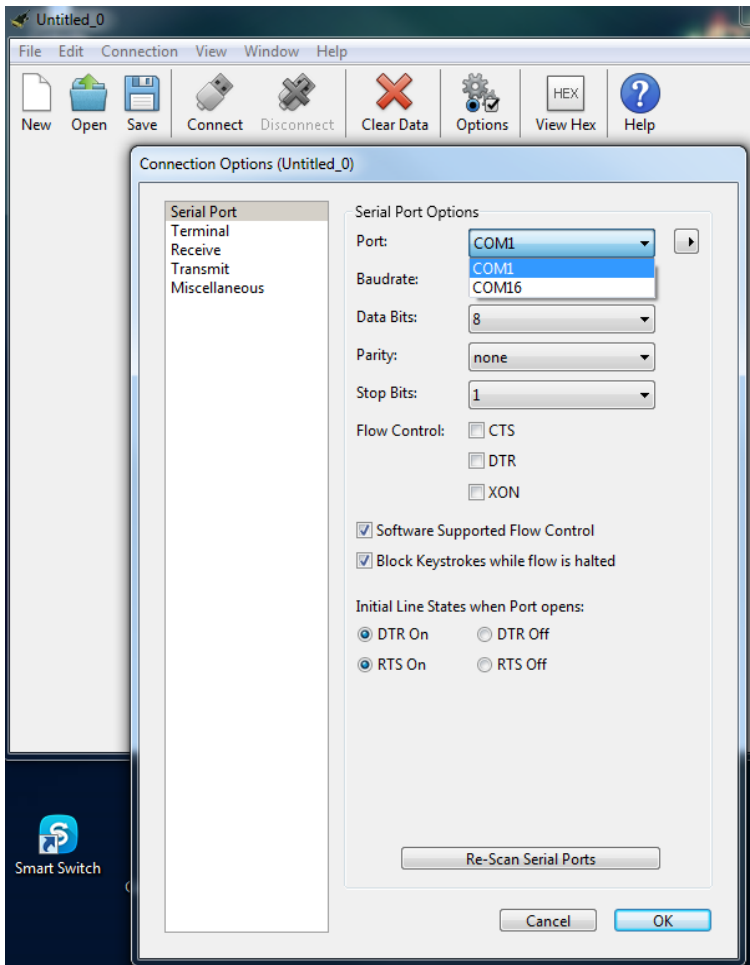
## Terminal

Launch a terminal on your PC (I recommend **CoolTerm** <http://freeware.the-meiers.org>)

Setup the terminal to **115200.N.8.1**

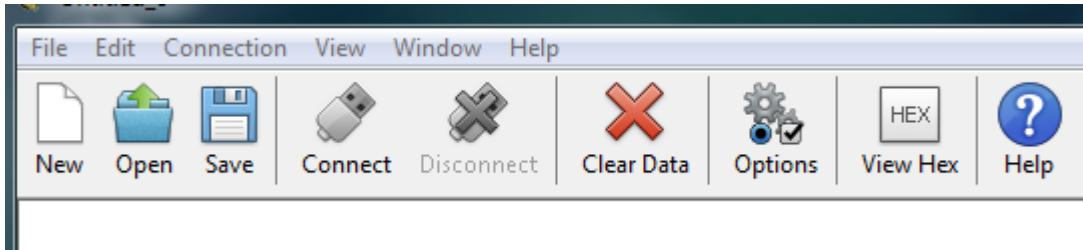


Select the **COM-port** you have noted above > **OK**.

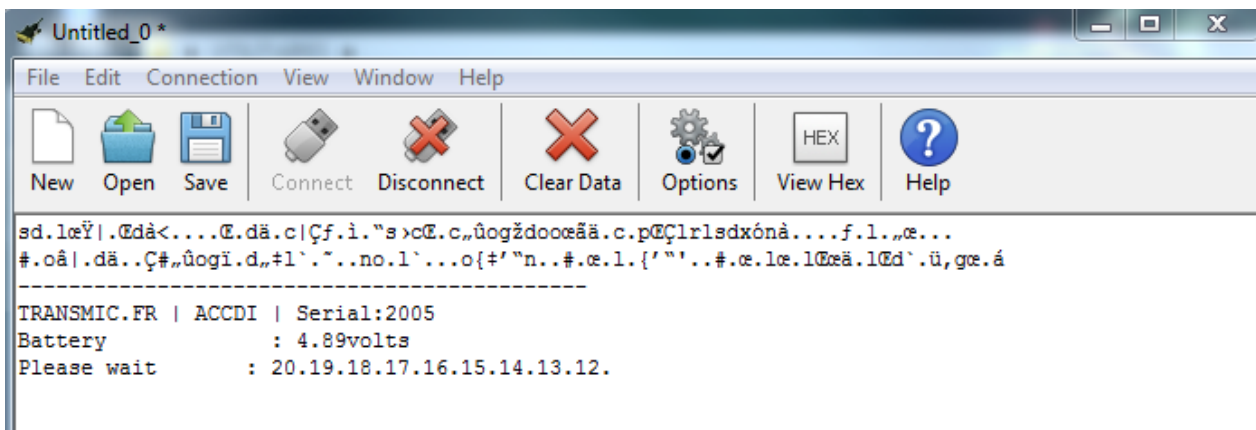


## Connection

Click on "**Connect**" button



AC-CDI v10 banner is displayed:

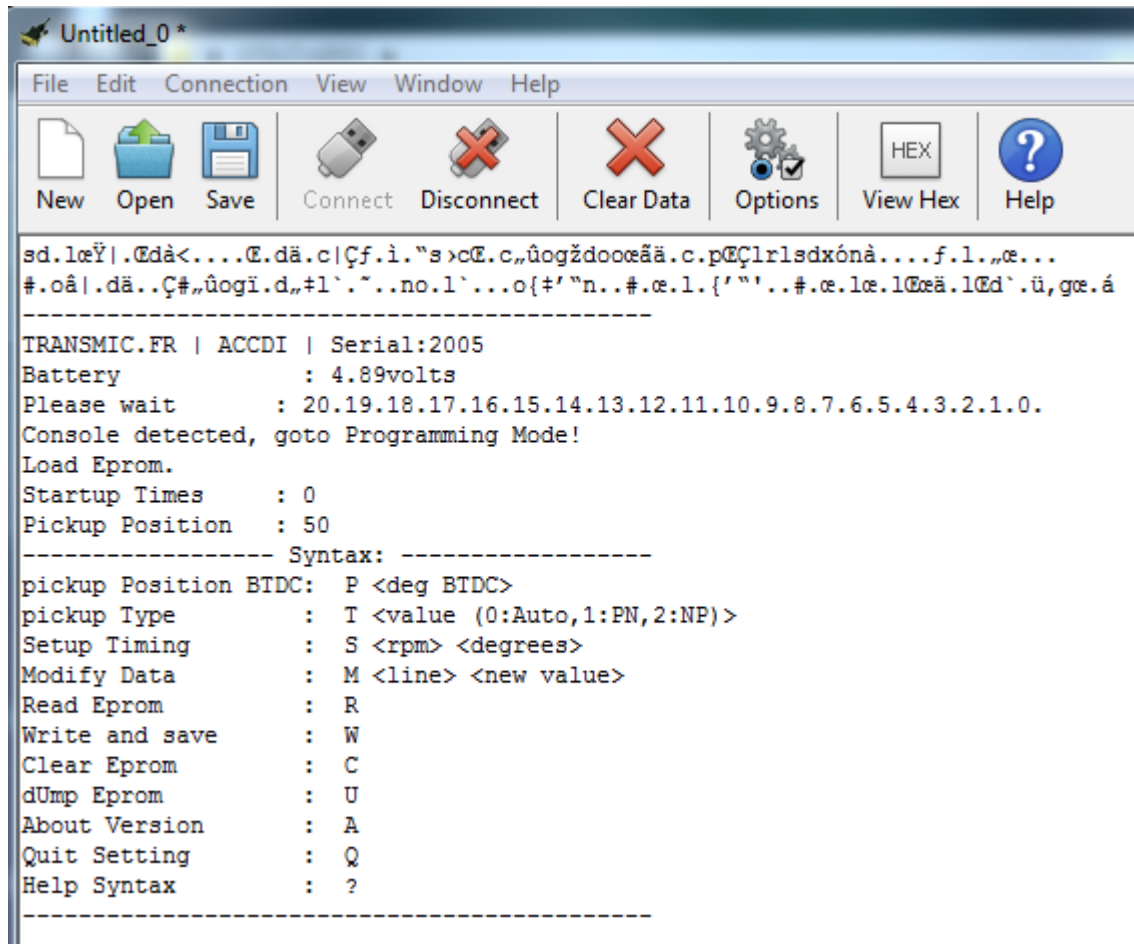


The CDI tests the serial port during 20seconds, Please wait.

If you don't see the countdown, or the countdown is terminated then press ? at any time

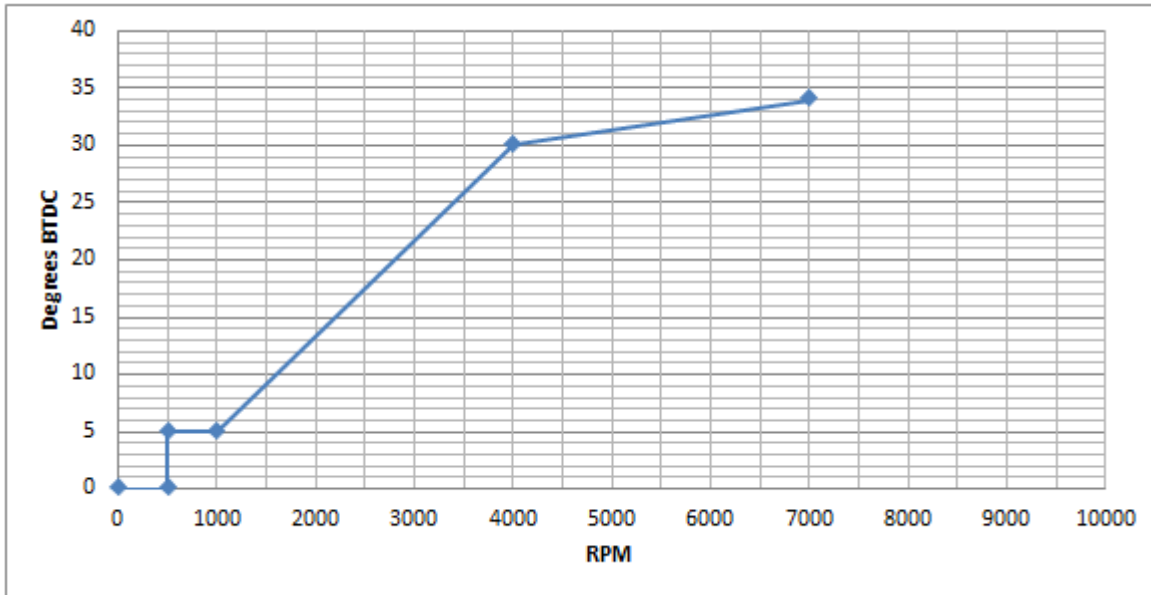
## Menu

If a console is detected or ? key has been entered, the Setup **MENU** is displayed:



## Setup

Assuming you want this ignition timing:



One can define the curve with 4 points but you can use up to 13 points.

*In red: command you type in, in blue: CDI response*

```
Console detected, goto Programing Mode!
```

```
Load Eprom.
```

```
Startup Times : 0
```

```
Pickup Position: 0
```

```
----- Syntax: -----
```

```
pickup Position BTDC: P <deg BTDC>
pickup Type          : T <value (0:Auto,1:PN,2:NP)>
Dwell Duration       : L <1 to 10ms>
Setup Timing         : S <rpm> <degrees>
Modify Data          : M <line> <new value>
Read Eprom           : R
Write and save       : W
Clear Eprom          : C
dUmp Eprom           : U
AutoSpark Mode       : A
About Version        : V
Quit Setting         : Q
Help Syntax          : ?
```

```
P 50
```

```
Pickup Position: 50 deg BTDC.
```

```
S 500 5
```

```
@1 500rpm = 5deg.
```

```
S 1000 5
```

```
@9 1000rpm = 5deg.
```

```
S 4000 30
```

```
@17 4000rpm = 30deg.
```

```
S 7000 35
```

```
@25 7000rpm = 35deg.
```

R

<Line><value>

```
1      500
5      5
9      1000
13     5
17     4000
21     30
25     7000
29     35
33     0
...
105    0
109    0
113    50
```

----- Syntax: -----

*If you want to modify the advance timing for 7000rpm and set 34° instead of 35°:*

M 29 34

<Line><new value>

Modify Line:29 with new value:34

R

```
1      500
5      5
9      1000
13     5
17     4000
21     30
25     7000
29     34
33     0
```

W

Saved.

Q

Quit.

*ACCDI is now rebooting...*

```
TRANSMIC.FR | ACCDI v10r0c0 | Serial:1901
Read Serial console..... Nothing received from console.
Load Eprom.
Startup Times: 1
Pickup Position: 50
Pickup Type: AUTO
Waiting for Pickup...
```

*Crank the engine*

```
Detected Type: NP
Ready to race!
```

*Auto detection mode* cannot be 100% reliable, especially when the pickup signal is weak!

I hardly recommend to hard setup the *pickup Type* once for all by typing: T 1 or T 2 accordingly.