

Summary

DRIVER	2
COM PORT	3
Terminal.....	4
Connection	5
Menu	6
Setup.....	7
Console during Running mode	9

DRIVER

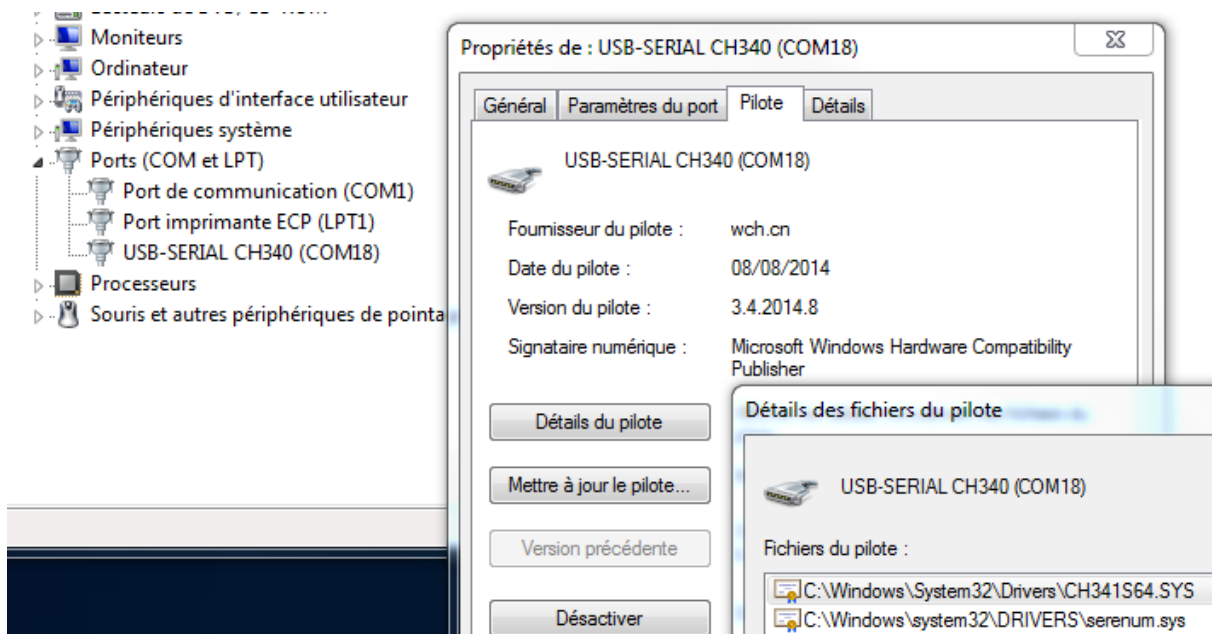
Install **CH340G** driver

Windows: <http://www.arduined.eu/tag/windows-7/>

Mac: https://wiki.wemos.cc/_media/ch341ser_mac_1.5.zip

Chip Manufacturer driver http://www.wch.cn/download/CH341SER_EXE.html

After restarting the PC, plug in the AC-CDI v10 via USB connector and it will be ready to go.



If it's not working, open "*Device Manager*", plug the CDI in, open *Ports, Driver* tab, if another Windows driver is in there, then "*Update driver*" find and install the one above for CH340.

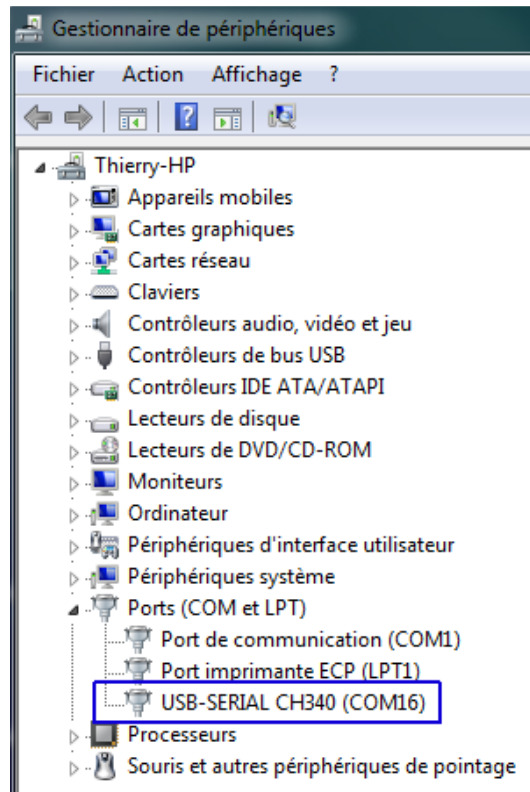
If Windows doesn't recognize the device, it'll appear in "*Other devices*" folder.



COM PORT

Open "*Device Manager*" under "*Ports (COM&LPT)*" you should notice a new COM-port

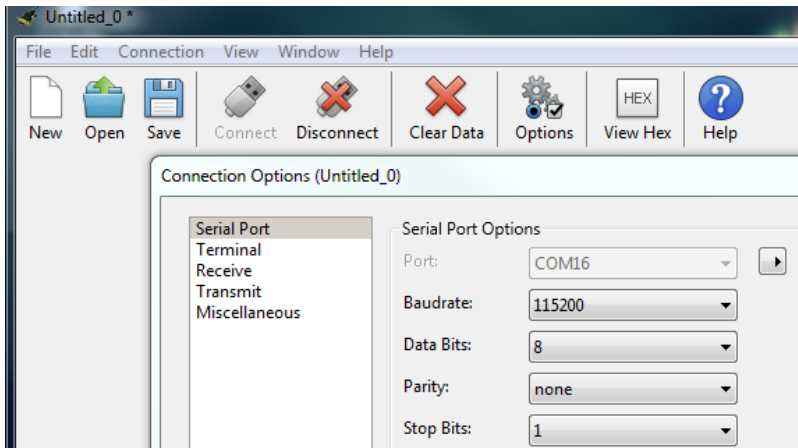
Note the number.



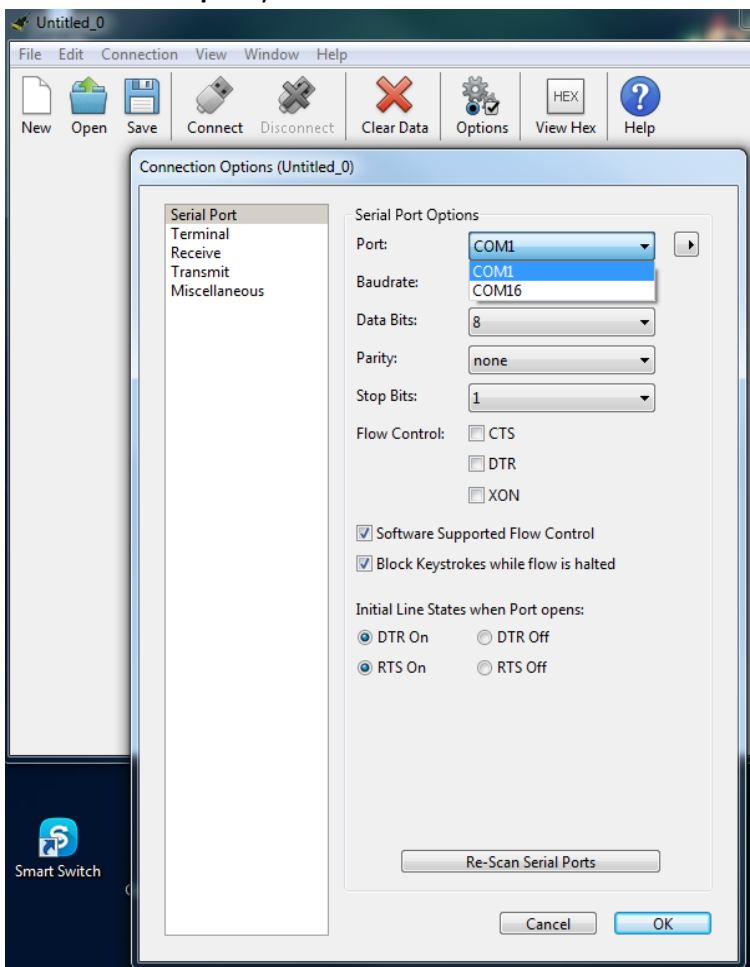
Terminal

Launch a terminal on your PC (I like **CoolTerm** <http://freeware.the-meiers.org>)
But [Putty](#) or [Kitty](#), [Teraterm](#) are useable too...

Setup the terminal to **115200.N.8.1**

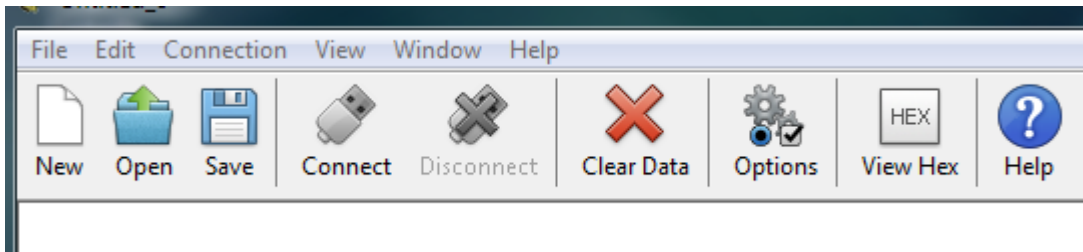


Select the **COM-port** you have noted above > **OK**.

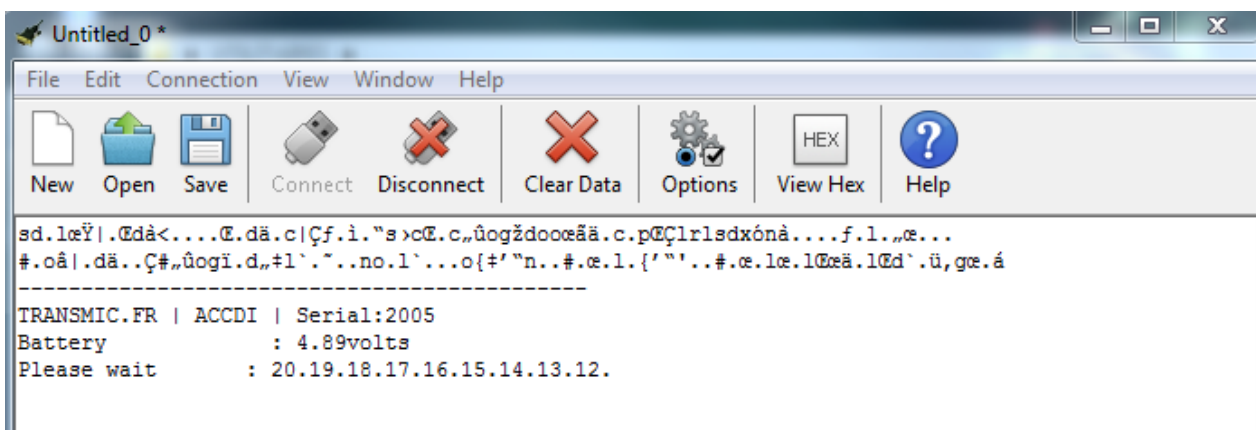


Connection

Click on "**Connect**" button



AC-CDI v10 banner is displayed:

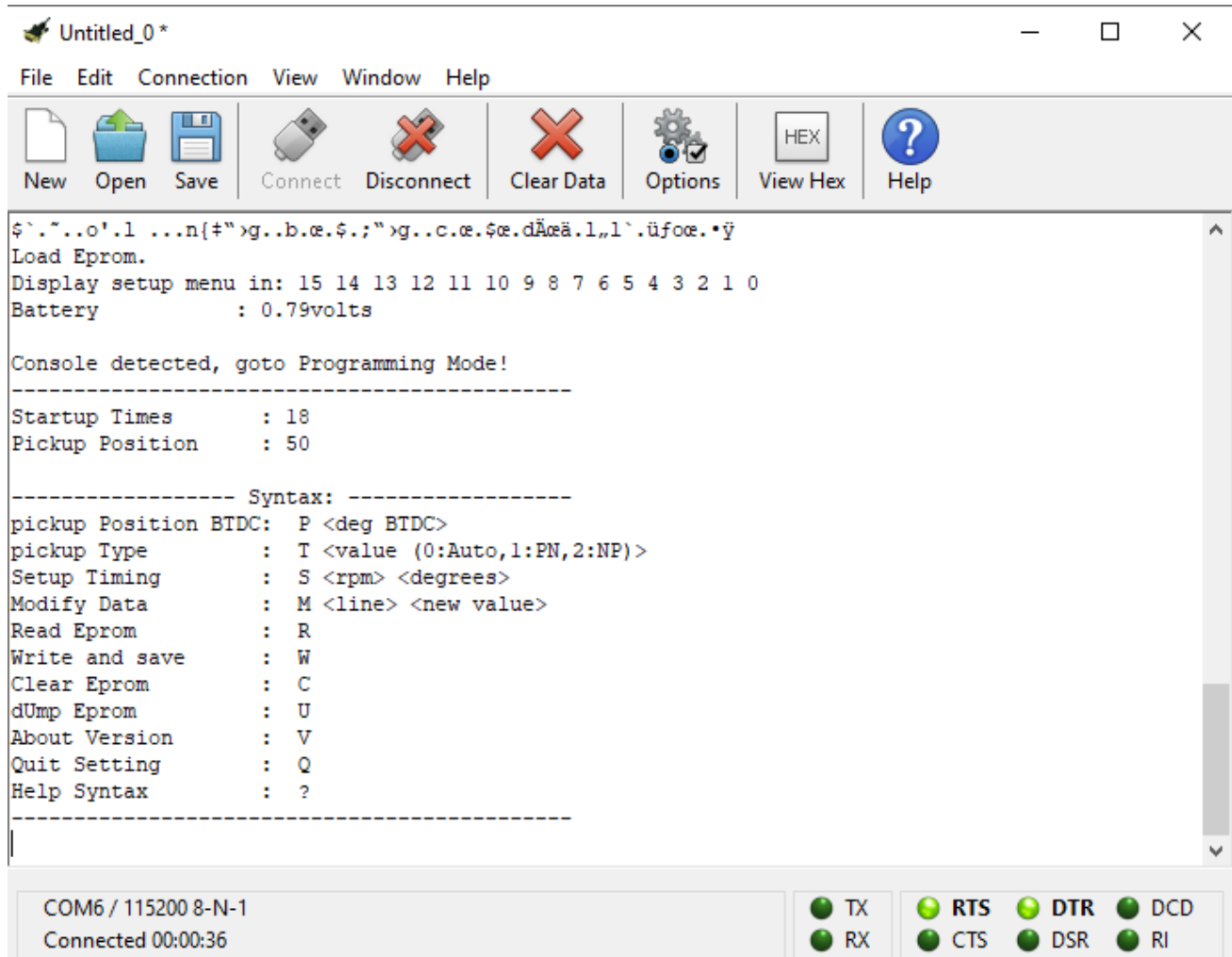


The CDI reads the serial port during 15 seconds, please wait.

If you don't see the countdown or the countdown is terminated then press **?** key at any time.

Menu

If a console is detected or ? has been entered, the Setup **MENU** is displayed:



Untitled_0*

File Edit Connection View Window Help

New Open Save Connect Disconnect Clear Data Options View Hex Help

```
$`.~...o'.1 ...n{#"}>g..b.œ.ç.;"}>g..c.œ.çœ.dÄæä.1,,1`.üfoœ.•ÿ
Load Eprom.
Display setup menu in: 15 14 13 12 11 10 9 8 7 6 5 4 3 2 1 0
Battery          : 0.79volts

Console detected, goto Programming Mode!
-----
Startup Times      : 18
Pickup Position    : 50

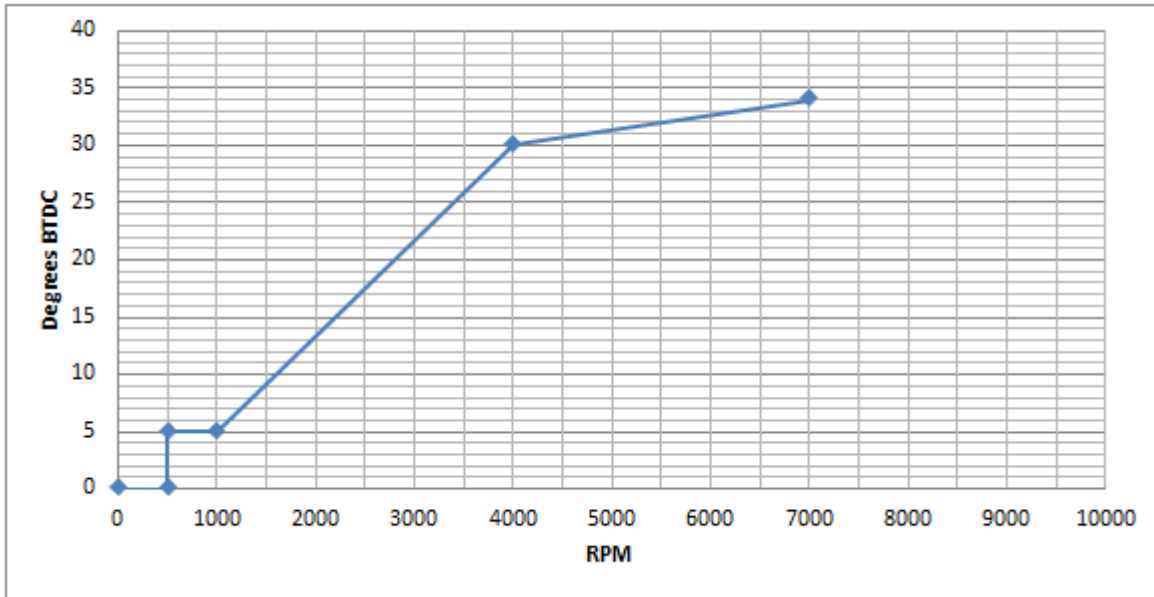
----- Syntax: -----
pickup Position BTDC: P <deg BTDC>
pickup Type        : T <value (0:Auto,1:PN,2:NP)>
Setup Timing       : S <rpm> <degrees>
Modify Data        : M <line> <new value>
Read Eprom         : R
Write and save     : W
Clear Eprom        : C
dUmp Eprom         : U
About Version      : V
Quit Setting       : Q
Help Syntax        : ?
-----

COM6 / 115200 8-N-1
Connected 00:00:36
```

TX RTS DTR DCD
RX CTS DSR RI

Setup

Assuming you want this ignition timing:



One can define the curve with 4 points but you can use up to 13 points.

In red: command you type in, in blue: CDI response

```
Console detected, goto Programing Mode!
```

```
Load Eprom.
```

```
Startup Times : 0
```

```
Pickup Position: 0
```

```
----- Syntax: -----
```

```
pickup Position BTDC: P <deg BTDC>
pickup Type          : T <value (0:Auto,1:PN,2:NP)>
Dwell Duration       : L <1 to 10ms>
Setup Timing         : S <rpm> <degrees>
Modify Data          : M <line> <new value>
Read Eprom           : R
Write and save       : W
Clear Eprom          : C
dUmp Eprom           : U
AutoSpark Mode       : A
About Version        : V
Quit Setting         : Q
Help Syntax          : ?
```

```
P 50
```

```
Pickup Position: 50 deg BTDC.
```

```
S 500 5
```

```
@1 500rpm = 5deg.
```

```
S 1000 5
```

```
@9 1000rpm = 5deg.
```

```
S 4000 30
```

```
@17 4000rpm = 30deg.
```

```
S 7000 35
```

```
@25 7000rpm = 35deg.
```

R

<Line><value>

```
1      500
5       5
9     1000
13     5
17    4000
21     30
25    7000
29    35
33     0
...
105    0
109    0
113    50
```

----- Syntax: -----

If you want to modify the advance timing for 7000rpm and set 34° instead of 35°:

M 29 34

<Line><new value>

Modify Line:29 with new value:34

R

```
1      500
5       5
9     1000
13     5
17    4000
21     30
25    7000
29    34
33     0
```

W

Saved.

Q

Quit.

ACCDI is now rebooting...

Disconnect the software and remove the USB cable.

Console during Running mode

At the end of the setup, leave the USB and console connected to the CDI.

- 1) Power the CDI ON with a +12v.
- 2) Press **Q** to quit
- 3) Once the CDI has done rebooting it will detect the +12v battery and go in running mode with console:

```
Quit Setting      : Q
Help Syntax      : ?
-----
Q
Quit.

ets Jan 8 2013,rst cause:2, boot mode:(3,6)

load 0x4010f000, len 1384, room 16
tail 8
chksum 0x2d
csum 0x2d
v09f0c112
~ld
e
Battery          : 12.36volts
Load Eprom.

-----
TRANSMIC.FR | ACCDI | Serial:2012
Pickup Type     : AUTO
Waiting for Pickup...

COM6 / 115200 8-N-1
Connected 00:02:57
```

The CDI is now in running mode and displays info on the console.

Crank the engine

Console shows:

```
Detected Type: NP
Ready to race!
```

Auto detection mode cannot be 100% reliable, especially when the pickup signal is weak!

I hardly recommend to hard setup the *pickup Type* once for all by typing: **T 1** or **T 2** accordingly.