

Summary

DRIVER	2
COM PORT	3
Terminal.....	4
Connection	5
Menu	6
Setup.....	7
Console during Running mode	9

DRIVER

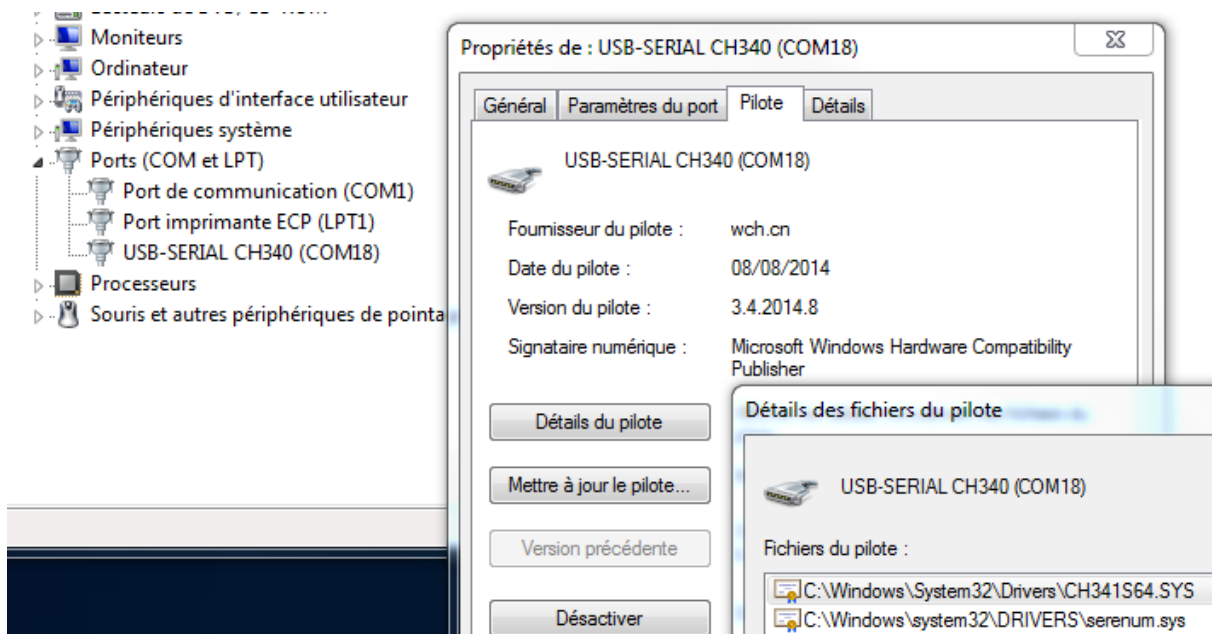
Install **CH340G** driver

Windows: <http://www.arduined.eu/tag/windows-7/>

Mac: https://wiki.wemos.cc/_media/ch341ser_mac_1.5.zip

Chip Manufacturer driver http://www.wch.cn/download/CH341SER_EXE.html

After restarting the PC, plug in the AC-CDI v10 via USB connector and it will be ready to go.



If it's not working, open "*Device Manager*", plug the CDI in, open *Ports*, *Driver* tab, if another Windows driver is in there, then "*Update driver*" find and install the one above for CH340.

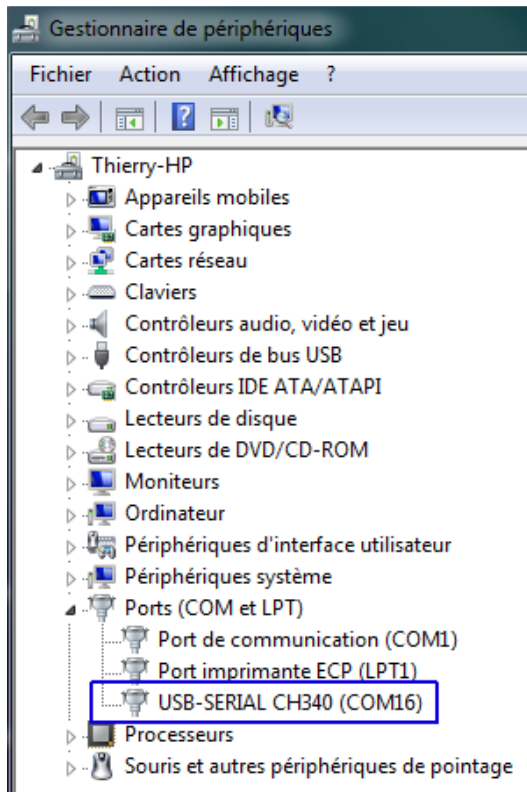
If Windows doesn't recognize the device, it'll appear in "*Other devices*" folder.



COM PORT

Open "*Device Manager*" under "*Ports (COM&LPT)*" you should notice a new COM-port

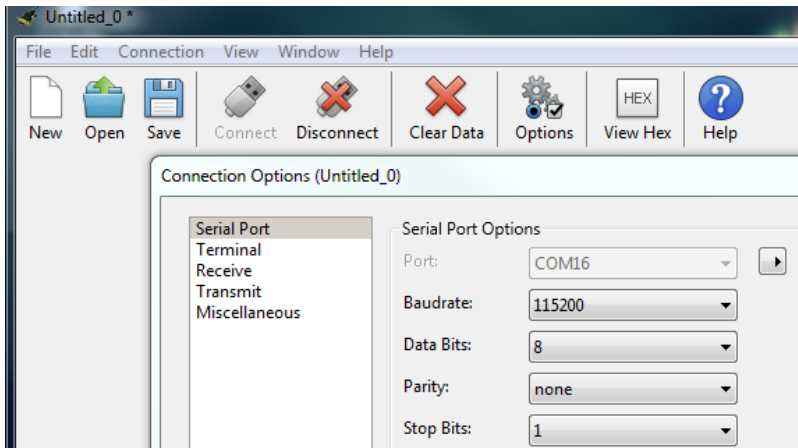
Note the number.



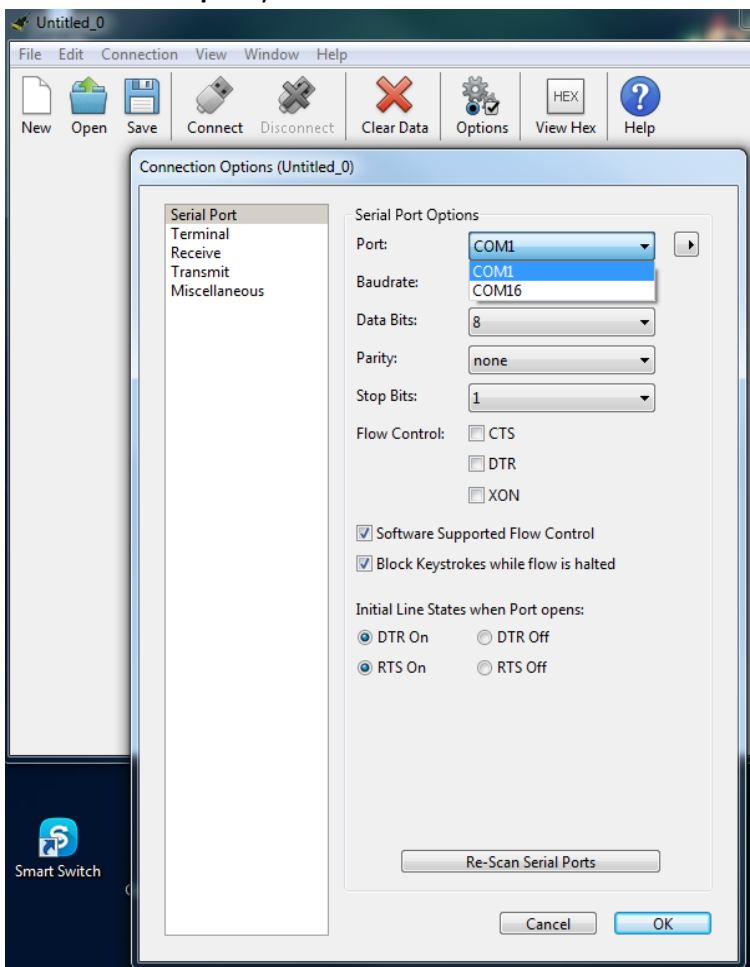
Terminal

Launch a terminal on your PC (I like **CoolTerm** <http://freeware.the-meiers.org>)
But [Putty](#) or [Kitty](#), [Teraterm](#) are useable too...

Setup the terminal to **115200.N.8.1**

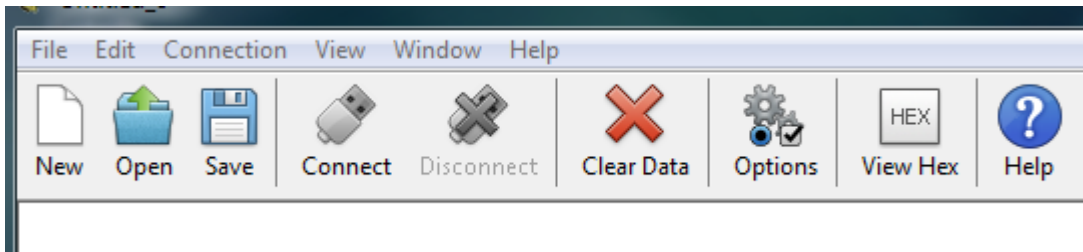


Select the **COM-port** you have noted above > **OK**.

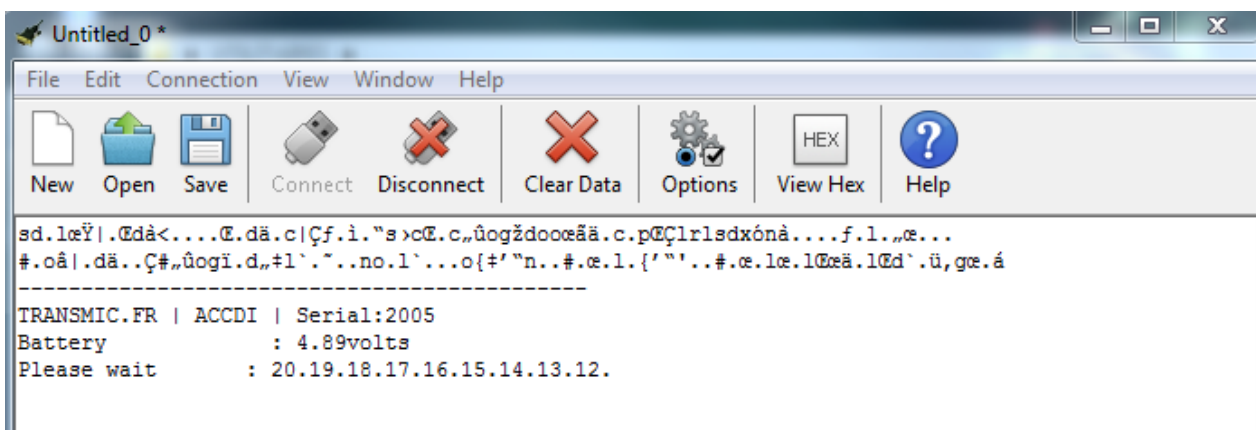


Connection

Click on "**Connect**" button



AC-CDI v10 banner is displayed:

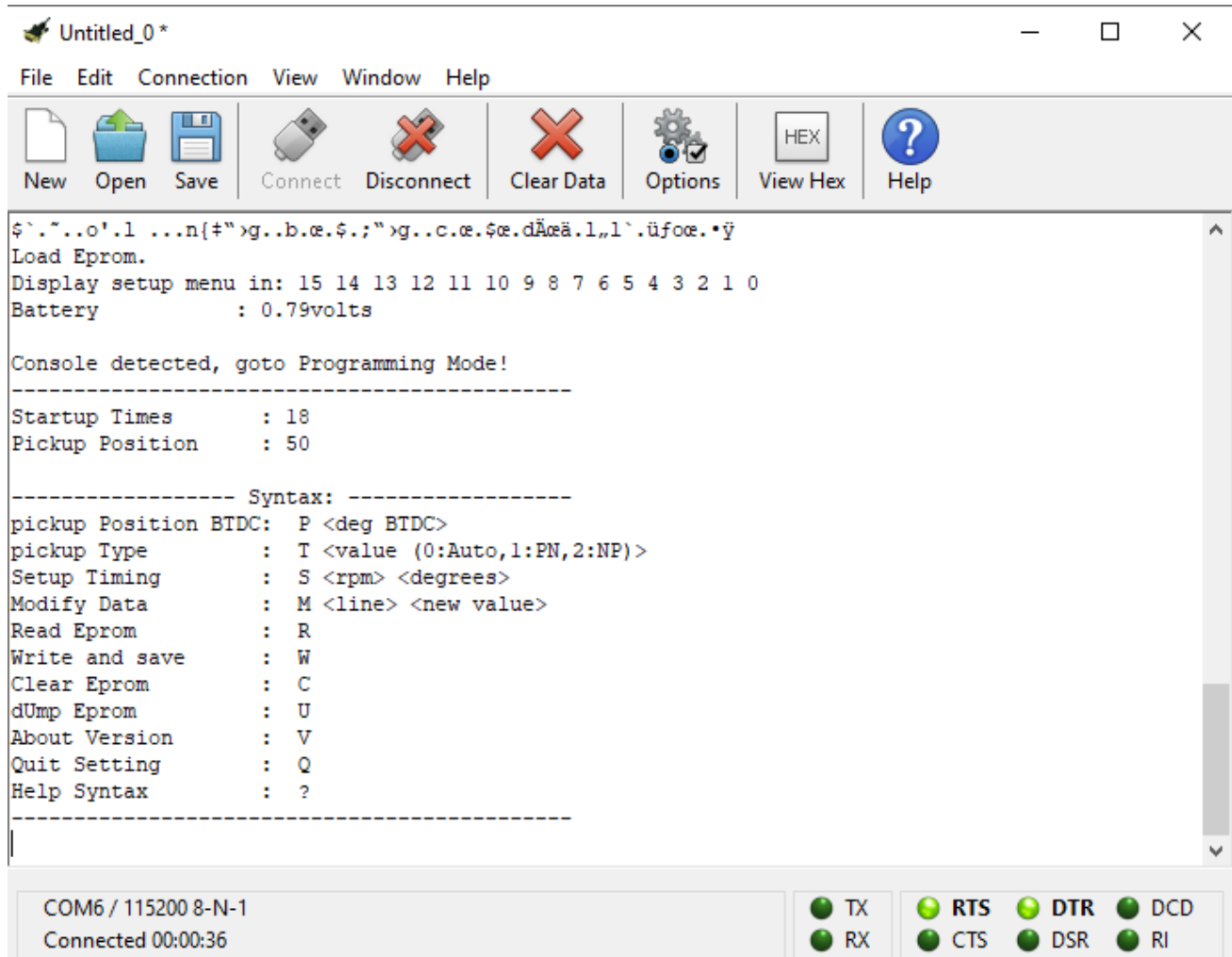


The CDI reads the serial port during 15 seconds, please wait.

If you don't see the countdown or the countdown is terminated then press **?** key at any time.

Menu

If a console is detected or ? has been entered, the Setup **MENU** is displayed:



The screenshot shows a software window titled "Untitled_0*" with a menu bar (File, Edit, Connection, View, Window, Help) and a toolbar with icons for New, Open, Save, Connect, Disconnect, Clear Data, Options, View Hex, and Help. The main text area displays the following content:

```
$`.~...o'.1 ...n{#"}>g..b.œ.ç.;"}>g..c.œ.çœ.dÄæä.1,,1`.üfoœ.•ÿ
Load Eprom.
Display setup menu in: 15 14 13 12 11 10 9 8 7 6 5 4 3 2 1 0
Battery          : 0.79volts

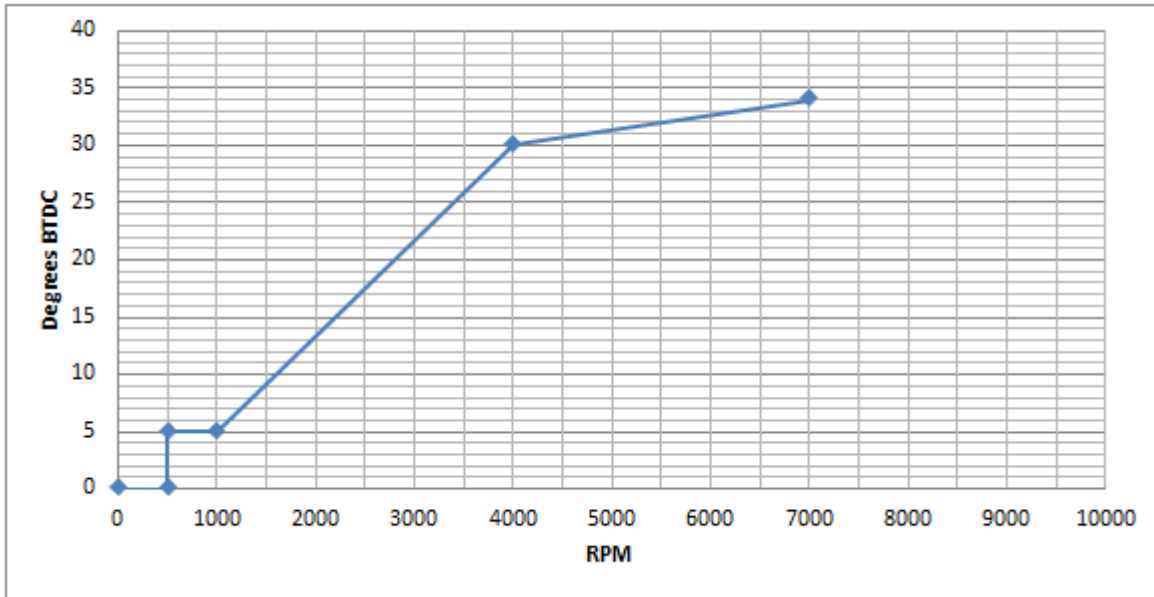
Console detected, goto Programming Mode!
-----
Startup Times      : 18
Pickup Position    : 50

----- Syntax: -----
pickup Position BTDC: P <deg BTDC>
pickup Type        : T <value (0:Auto,1:PN,2:NP)>
Setup Timing       : S <rpm> <degrees>
Modify Data        : M <line> <new value>
Read Eprom         : R
Write and save     : W
Clear Eprom        : C
dUmp Eprom        : U
About Version      : V
Quit Setting       : Q
Help Syntax        : ?
-----
```

The status bar at the bottom indicates "COM6 / 115200 8-N-1" and "Connected 00:00:36". It also features eight status indicators: TX, RX, RTS, CTS, DTR, DSR, DCD, and RI, each represented by a green circle.

Setup

Assuming you want this ignition timing:



One can define the curve with 4 points but you can use up to 13 points.

In red: command you type in, in blue: CDI response

```
Console detected, goto Programing Mode!
```

```
Load Eprom.
```

```
Startup Times : 0
```

```
Pickup Position: 0
```

```
----- Syntax: -----
```

```
pickup Position BTDC: P <deg BTDC>
pickup Type          : T <value (0:Auto,1:PN,2:NP)>
Dwell Duration       : L <1 to 10ms>
Setup Timing         : S <rpm> <degrees>
Modify Data          : M <line> <new value>
Read Eprom           : R
Write and save       : W
Clear Eprom          : C
dUmp Eprom           : U
AutoSpark Mode       : A
About Version        : V
Quit Setting         : Q
Help Syntax          : ?
```

```
P 50
```

```
Pickup Position: 50 deg BTDC.
```

```
S 500 5
```

```
@1 500rpm = 5deg.
```

```
S 1000 5
```

```
@9 1000rpm = 5deg.
```

```
S 4000 30
```

```
@17 4000rpm = 30deg.
```

```
S 7000 35
```

```
@25 7000rpm = 35deg.
```

R

<Line><value>

```
1      500
5       5
9     1000
13     5
17    4000
21     30
25    7000
29    35
33     0
...
105    0
109    0
113    50
```

----- Syntax: -----

If you want to modify the advance timing for 7000rpm and set 34° instead of 35°:

M 29 34

<Line><new value>

Modify Line:29 with new value:34

R

```
1      500
5       5
9     1000
13     5
17    4000
21     30
25    7000
29    34
33     0
```

W

Saved.

Q

Quit.

ACCDI is now rebooting...

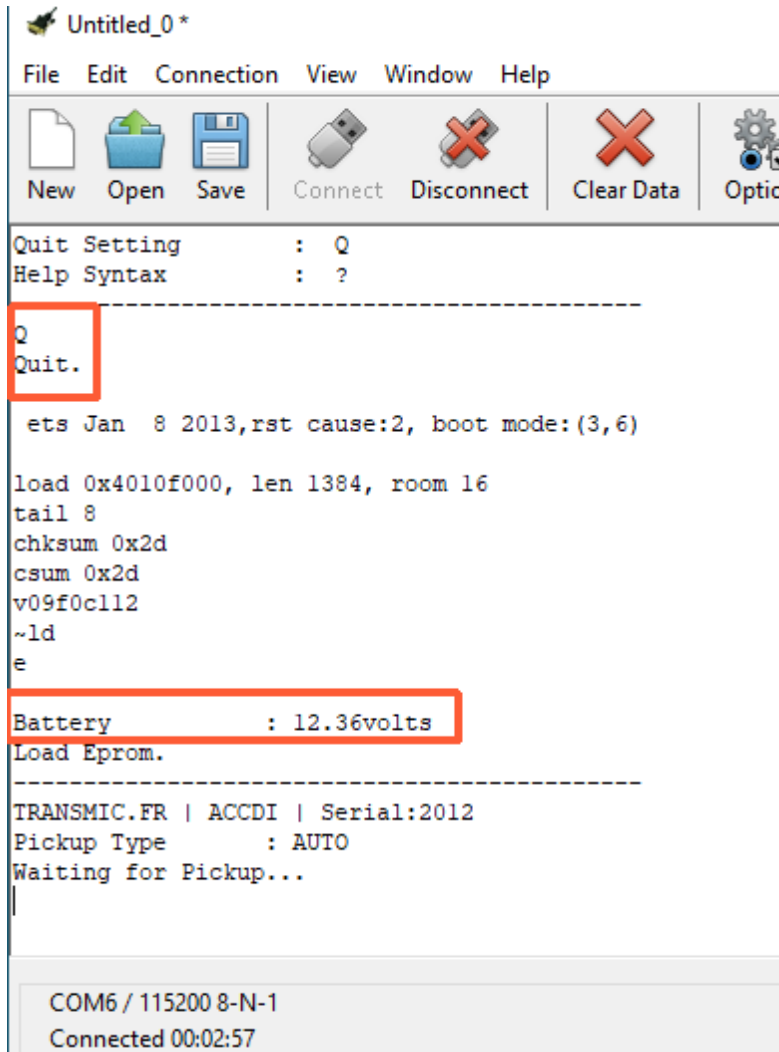
Disconnect the software and remove the USB cable.

Console during Running mode

Method N°1

At the end of the setup, leave the USB and console connected to the CDI.

- 1) Power the CDI ON with a +12v.
- 2) Press **Q** to quit
- 3) Once the CDI has done rebooting it will detect the +12v battery and go in running mode with console:



```
Untitled_0*
File Edit Connection View Window Help
New Open Save Connect Disconnect Clear Data Optio
Quit Setting      : Q
Help Syntax       : ?
-----
Q
Quit.
ets Jan 8 2013, rst cause:2, boot mode:(3,6)
load 0x4010f000, len 1384, room 16
tail 8
chksum 0x2d
csum 0x2d
v09f0c112
~ld
e
Battery           : 12.36volts
Load Eprom.
-----
TRANSMIC.FR | ACCDI | Serial:2012
Pickup Type      : AUTO
Waiting for Pickup...
COM6 / 115200 8-N-1
Connected 00:02:57
```

Method N°2

- 1) During the countdown, power the CDI ON with a +12v.
- 2) At the end of the countdown, CDI will detect the battery and restart in running mode:

```
-  
Display setup menu in: 15 14 13 12 11 10 9 8 7 6 5 4 3 2 1 0  
Battery          : 12.36volts  
Battery detected! Restart in running mode...
```

```
ets Jan  8 2013,rst cause:2, boot mode:(3,6)
```

```
load 0x4010f000, len 1384, room 16  
tail 8  
chksum 0x2d  
csum 0x2d  
v09f0c112  
~ld  
e
```

```
Battery          : 12.36volts  
Load Eprom.
```

```
-----  
TRANSMIC.FR | ACCDI | Serial:2012  
Pickup Type     : AUTO  
Waiting for Pickup...
```

The CDI is now in running mode and displays info on the console.

Crank the engine

Console shows:

```
Detected Type: NP  
Ready to race!
```

Auto detection mode cannot be 100% reliable, especially when the pickup signal is weak!

I hardly recommend to hard setup the *pickup Type* once for all by typing: **T 1** or **T 2** accordingly.